

## MUP96A-1W24V

### Product Feature

- Single channel constant voltage output, Output Current 4A Max
- 100% output when no dimming signal input, can be used as normal power supply
- Protection: Overload; short circuit; Overcurrent
- Class 2 Output
- Safety according to UL8750 &UL 1310
- Lifetime50,000h@tc80°C
- Warranty Condition 5 years @tc80°C
- Suitable for Dry , Damp & Wet Locations



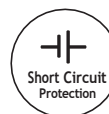
#### Application



LED Strip Light



Flicker free



Short Circuit Protection



Overload Protection

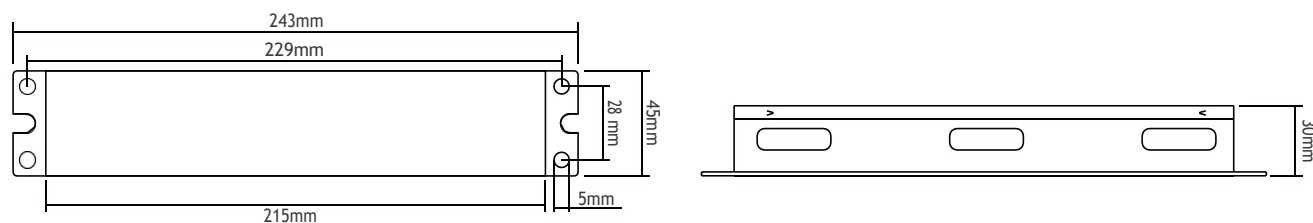


Overcurrent Protection

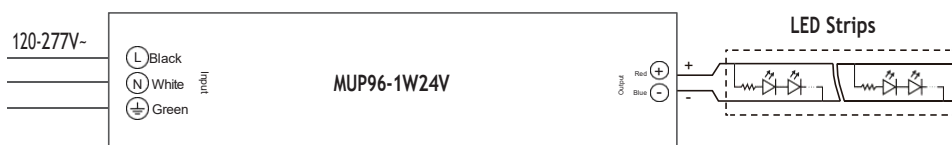
### Technical Parameters

Model	MUP96A-1W24V	
Input	Efficiency	88%@120VAC, Full load
	Voltage	120VAC-277VAC
	Frequency	50/60Hz
	Current	0.95Amax@120VAC, 0.55Amax@230VAC, 0.45Amax@277VAC, Full load
	Power Factor	>0.95@120VAC, Full load
	THD	<20%@120VAC, <20%@277VAC, Full load
	Inrush Current	Cold start, 28A@120VAC 220us, 70A@277VAC 150us
	No load power	< 0.5W
Output	Voltage	24VDC
	Current	4.0A
	Power	96W
	Channel	1
	Frequency	20kHz PWM
	R & N (Max)	≤300mV Vp-p
	Over power limit	≤150%
	Turn On Time	<0.75s, @120Vac (When the light begins to shine)
Function	Dimming type	0/1-10V active signal, adjustable resistance and PWM signal
	Dimming range	1%-100%
Protection	Short circuit	Shut down output, Auto-recovery after Fault Clearance
	Over load	Hiccup Protection, Auto-recovery after Fault Clearance
	Over Voltage	Hiccup Protection, Auto-recovery after Fault Clearance
	Over temperature	Shut down and auto-restart after normal temperature
Safety & EMC	Surge	L-N:6kV, L-N-PG: 6kV
	Withstand Voltage	I/P-O/P: 2000VAC/1min/5mA; I/P-Gnd: 1500VAC/1min/5mA; O/P-Gnd: 500VAC/1min/5mA;
	Safety standards	UL8750/UL1310/CSA25013,CSA class P
	EMI Eission	EN55015,EN61000-3-2 Class C,IEC61000-3-3
	EMC Immunity	FCC class B(120V)/class A(277V)
Others	Working Temp.	-20°C~60°C [-4° F~140° F]
	Storage Temp.; Humidity	-40°C~85°C [-40° F~194° F], 20-90%RH
	Tc	80°C [ 176° F ]
	Material	Metal
	IP Rating	IP20
	Lifetime	50,000h@tc:80°C [ 176° F ]
	Warranty Condition	5 years
	Switch Cycle	>25,000 times
	Packing Size	Net weight: 700g±5%/PCS; 20PCS/Carton; 14.5kg±5%/Carton; Carton Size: 300*268*168mm(L*W*H)
	Dimension	243*45*30mm(L*W*H)

## Dimension(mm)



## Wiring Diagram

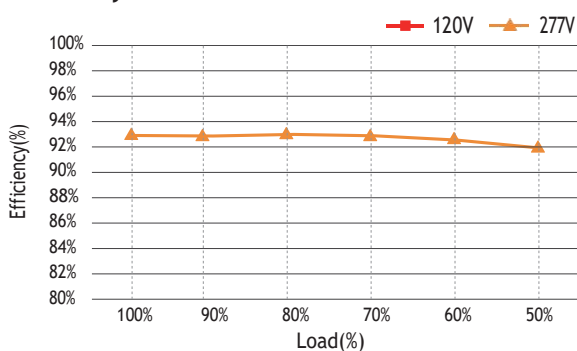


## Max. quantity of drivers per miniature circuit breaker

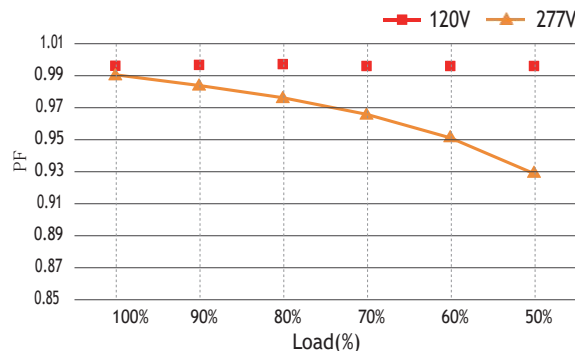
Specification item	Value	Value	Condition
Inrush current $I_{peak}$	28A (120V)	70A (277V)	Input Voltage 120V/277V
Inrush current $T_{width}$	220us (120V)	150us (277V)	Input Voltage 120V/277V, measured to 50% $I_{peak}$

MCB	Input Voltage 120V Drivers	Input Voltage 277V Drivers	MCB	Input Voltage 120V Drivers	Input Voltage 277V Drivers
B10	10pcs	7pcs	C10	10pcs	13pcs
B13	13pcs	10pcs	C13	13pcs	17pcs
B16	16pcs	12pcs	C16	16pcs	21pcs
B20	21pcs	15pcs	C20	21pcs	26pcs
			D16	16pcs	35pcs

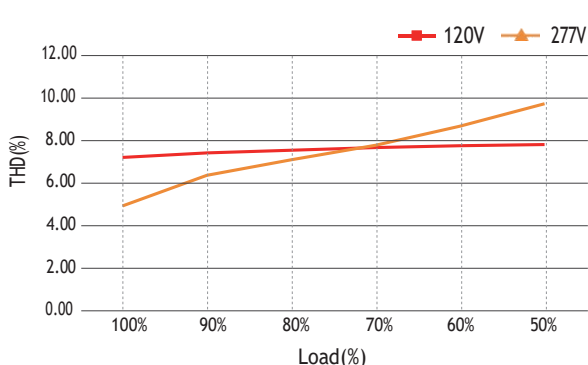
## Efficiency vs Load



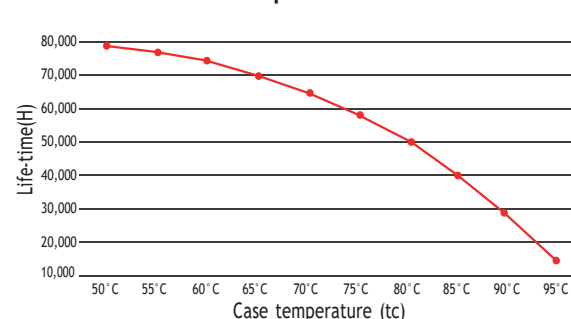
## PF vs Load



## THD vs Load

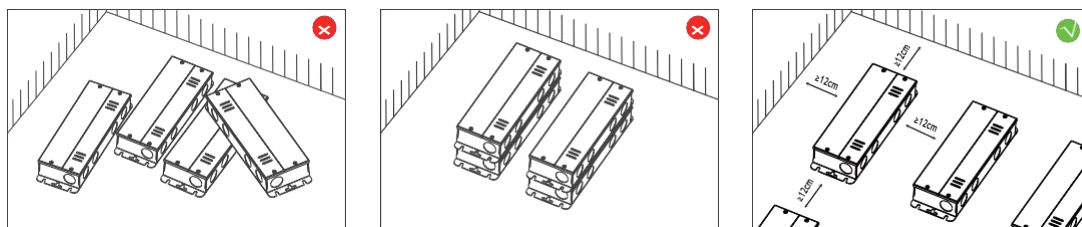


## Life-time vs. case temperature



The life-time of the led driver is shown in the figure above (calculated based on the 90% survival rate). The relation of tc to temperature depends also on the luminaire design.

## Installation Precautions



Please do not stack the products. The distance between two products should be  $>12\text{cm}$  so as not to affect heat dissipation and the lifespan of the products.

## Cautions

This product must be installed and adjusted by a qualified professional.		
1	Confirmation of installation conditions	<ul style="list-style-type: none"> <li>· <b>Waterproof and Protection:</b> Install in a suitable location according to the waterproof and protection requirements of the power supply. Products without waterproof function should be protected from direct sunlight and rain. When installing outdoors, please use a waterproof box for protection.</li> <li>· <b>Heat dissipation requirements:</b> The drive power supply should avoid exposure to high temperature environments. Please ensure that the working environment temperature is within the recommended range. To ensure proper heat dissipation of the drive power supply, a well ventilated area should be selected for installation. Good heat dissipation conditions can help extend product lifespan.</li> </ul>
2	Power check	<ul style="list-style-type: none"> <li>· Before use, check the product parameters and confirm that the output voltage and current of the LED power supply meet the requirements</li> </ul>
3	Safe wiring	<ul style="list-style-type: none"> <li>· Use cables that meet the specifications to ensure that the cross-section of the wire matches the requirements of the driving power supply. Solid cables typically measuring <math>0.75\text{-}2.5\text{ mm}^2</math>, (Please refer to the silk screen printing or wiring diagram in the instruction manual for specific wire diameter requirements).</li> <li>· If the power supply (metal casing) is installed on a grounded lighting component or equipment, the power supply needs to be grounded.</li> </ul>
4	Wiring confirmation	<ul style="list-style-type: none"> <li>· Before power on debugging, ensure that the wiring is secure and avoid poor contact to prevent unstable current or equipment damage.</li> </ul>
5	Repair suggestions	<ul style="list-style-type: none"> <li>· If the product malfunctions, please do not repair it without authorization. If you have any questions, please contact the supplier or sales team for assistance.</li> </ul>

※ The contents of this manual are updated without prior notice. If the function of the product you are using is inconsistent with the instructions, the function of the product shall prevail. Please contact us if you have any questions .

## Warranty Agreement

1. Warranty periods from the date of delivery : 5 years.
2. Free repair or replacement services for quality problems are provided within warranty periods.

## Warranty exclusions below:

The following situations are not covered by the free warranty or replacement service:

1. Exceeding the warranty period.
2. Damage caused by human factors such as high voltage, overload, and improper operation.
3. The appearance of the product is severely damaged or deformed.
4. Normal wear and tear or aging during regular product use.
5. Damage caused by natural disasters or force majeure factors.
6. The quality inspection label of the product is damaged (QC PASS).
7. No contract or valid invoice proof signed with EUCHIPS has been provided.

※ Remedies: Repair or replacement is the only remedy provided by EUCHIPS to the customer, and EUCHIPS shall not be liable for incidental damages arising from repair or replacement, unless within the scope of applicable law.

※ Adjustment of Warranty Terms: EUCHIPS reserves the right to modify or adjust the warranty terms, which shall be published in writing.